

| INTERVAL | | SAMPLE NUMBER | | ASSAY RESULTS | | |
|----------|-------|---------------|-----|---------------|--------|--------|
| From | To | | | ppb Au | ppm Ag | ppm Pb |
| 7.31 | 8.31 | MO7250 | 2 | 0.1 | | 25 |
| 16.15 | 17.15 | MO7251 | 1 | 0.1 | | 22 |
| 22.56 | 23.16 | MO7252 | 1 | 0.1 | | 21 |
| 30.08 | 31.08 | MO7253 | 1 | 0.2 | | 14 |
| 37.49 | 38.49 | MO7254 | 2 | 0.1 | | 120 |
| 46.33 | 47.33 | MO7255 | 16 | 1.4 | | 57 |
| 51.73 | 52.73 | MO7256 | 1 | 0.3 | | 35 |
| 52.73 | 53.40 | MO7168 | 20 | 0.2 | | 62 |
| 53.40 | 54.56 | MO7169 | 1 | 0.2 | | 37 |
| 54.56 | 55.17 | MO7170 | 82 | 1.7 | | 57 |
| 55.17 | 57.61 | MO7171 | 4 | 0.7 | | 154 |
| 57.61 | 58.61 | MO7257 | 1 | 0.6 | | 104 |
| 58.61 | 59.76 | MO7172 | 2 | 0.6 | | 720 |
| 59.76 | 60.66 | MO7173 | 4 | 1.8 | | 4600 |
| 60.66 | 60.80 | MO7258 | 2 | 0.2 | | 58 |
| 60.80 | 62.48 | MO7174 | 43 | 1.0 | | 142 |
| 62.48 | 63.40 | MO7175 | 1 | 0.4 | | 68 |
| 63.40 | 64.31 | MO7176 | 22 | 0.7 | | 198 |
| 64.31 | 66.65 | MO7177 | 10 | 0.2 | | 58 |
| 66.65 | 67.00 | MO7178 | 3 | 0.2 | | 81 |
| 67.00 | 67.36 | MO7259 | 11 | 0.8 | | 60 |
| 67.36 | 68.70 | MO7179 | 4 | 0.3 | | 37 |
| 68.70 | 69.10 | MO7260 | 5 | 0.3 | | 20 |
| 69.10 | 70.83 | MO7180 | 8 | 0.9 | | 153 |
| 70.83 | 71.93 | MO7181 | 10 | 1.3 | | 990 |
| 71.93 | 72.18 | MO7261 | 1 | 0.2 | | 67 |
| 72.18 | 72.40 | MO7182 | 10 | 0.8 | | 83 |
| 72.40 | 73.76 | MO7183 | 4 | 0.7 | | 68 |
| 73.76 | 73.90 | MO7262 | 2 | 0.6 | | 32 |
| 73.90 | 75.59 | MO7184 | 2 | 1.1 | | 56 |
| 75.59 | 76.59 | MO7263 | 6 | 0.9 | | 850 |
| 76.59 | 78.70 | MO7185 | 6 | 1.5 | | 345 |
| 78.70 | 79.40 | MO7264 | 11 | 6.2 | | 555 |
| 79.40 | 80.30 | MO7265 | 411 | 6.9 | | 850 |
| 80.30 | 81.07 | MO7266 | 6 | 1.2 | | 495 |
| 81.07 | 82.07 | MO7186 | 5 | 0.5 | | 72 |

HOLE LP82-5
 COORDINATES 48,560N, 54,385E
 COLLAR ELEVATION 1572m
 AZIMUTH 100° DIP -50°
 DEPTH 91.4m (300')

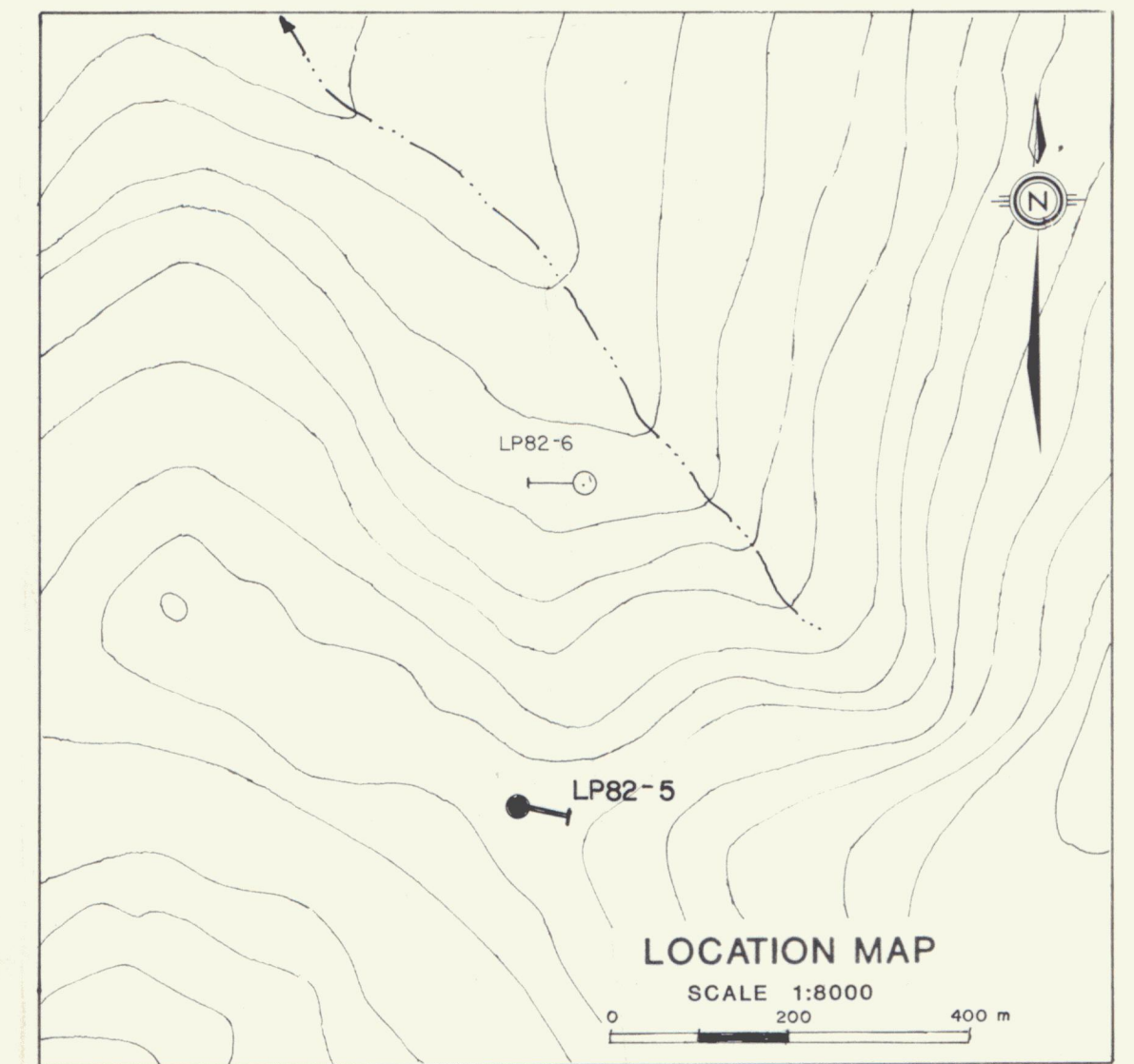


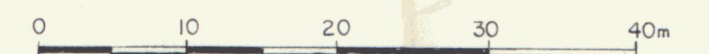
Figure L7

ARCHER, CATHRO & ASSOCIATES (1981) LIMITED

CROSS-SECTION DDH LP82-5

LILYPAD PROPERTY
 NAT JOINT VENTURE

SCALE 1:500



W. J. Cathro
Jan/83